
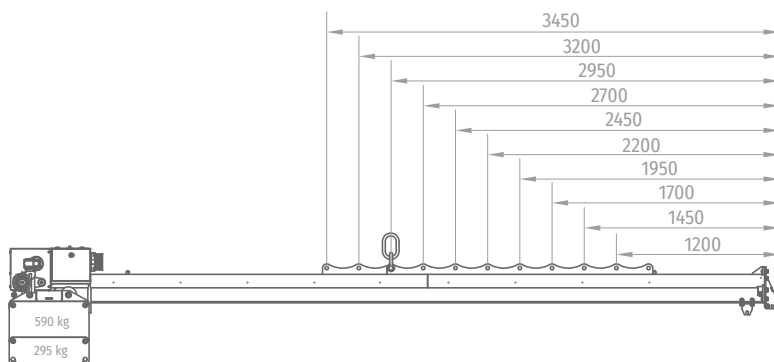
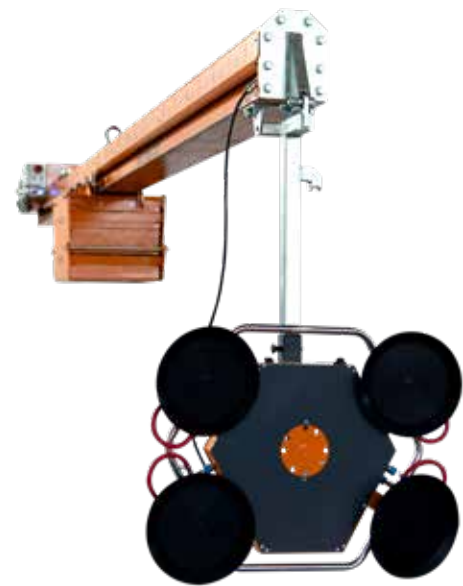


CW2-6000



WORK SERIES



CW2-6000 COMPATIBLE WITH: VS1 - VS2 - VR2 - VR3 - VR4 - VR136 - XL1 - XL2 - XL3 - XE1 - XE2

 3500 kg



MODEL	N° CONTERWEIGH BLOCK		TARE (kg)	MAXIMUM LOAD ACCORDING TO CANTILEVER									
	BCW-L (590Kg)	BCW-S (295Kg)		1200	1200 mm	1450 mm	1700 mm	1950 mm	2200 mm	2450 mm	2700 mm	2950 mm	3200 mm
	1	1	2085	3500 kg	2945 kg	2450 kg	1865 kg	1600 kg	1225 kg	1080 kg	790 kg	790 kg	540 kg
	1	0	1790	2700 kg	2100 kg	1600 kg	1300 kg	1000 kg	840 kg	650 kg	540 kg	420 kg	320 kg

kW	150 W
	3 m
	OPTIONAL

	220 VAC (50 - 60 Hz)
	OK

CW2-6000

